

THIS DOCUMENT AND ITS CONTENTS ARE THE PROPERTY OF LEXAIR, INC. THEY ARE FURNISHED TO YOU ON THE FOLLOWING CONDITIONS:
 NO RIGHT OR LICENSE IN RESPECT OF THIS DOCUMENT OR ITS CONTENTS IS GIVEN OR WAIVED IN SUPPLYING THE DOCUMENT TO YOU.
 THIS DOCUMENT OR ITS CONTENTS ARE NOT TO BE USED OR TREATED IN ANY MANNER INCONSISTENT WITH THE RIGHTS OF LEXAIR, INC.
 OR TO ITS DETRIMENT AND ARE NOT TO BE COPIED, REPRODUCED, OR DISCLOSED OF, EXCEPT WITH ITS PRIOR WRITTEN CONSENT.

ITEM NO.	PART NUMBER	DESCRIPTION	QTY.
1	20-0009	BODY, 1/2" NPT 2-W	1
2	20-0067	NUT HEX 1/2 3/8 1/2 NPT 2-W	1
3	20-0068	GUIDE POPPET 2-W	1
4	20-1329	SPRING, CONICAL, 16LB/IN	1
5	SEE TBL (SM)	POPPET ASSY	1
6	SEE TBL (SM)	O-RING	1

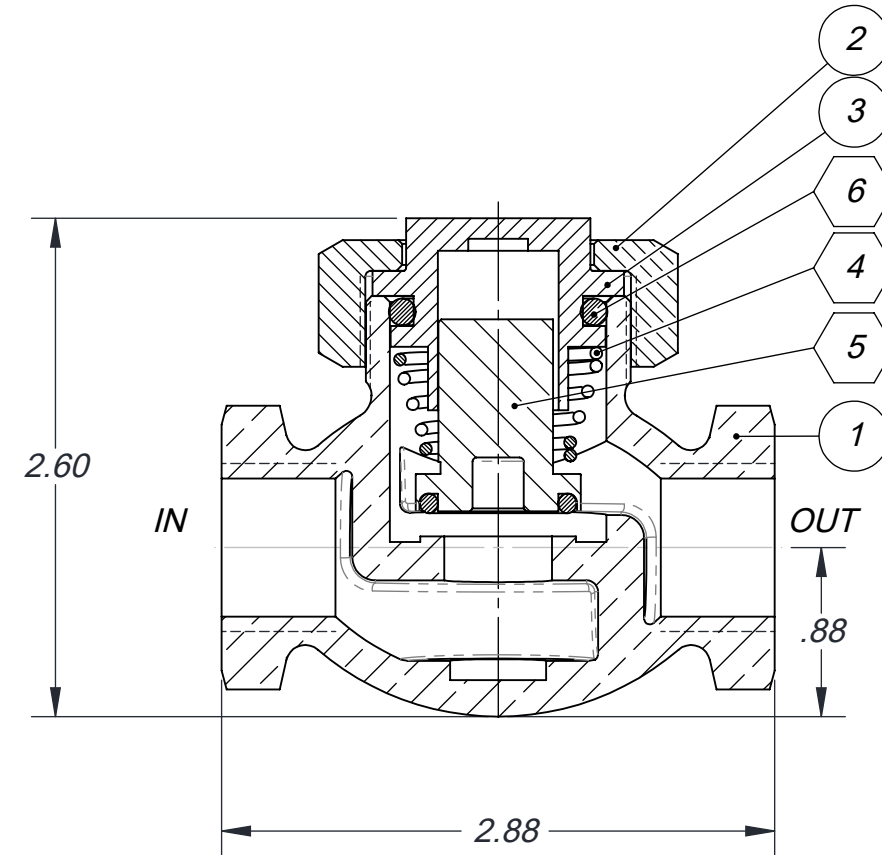
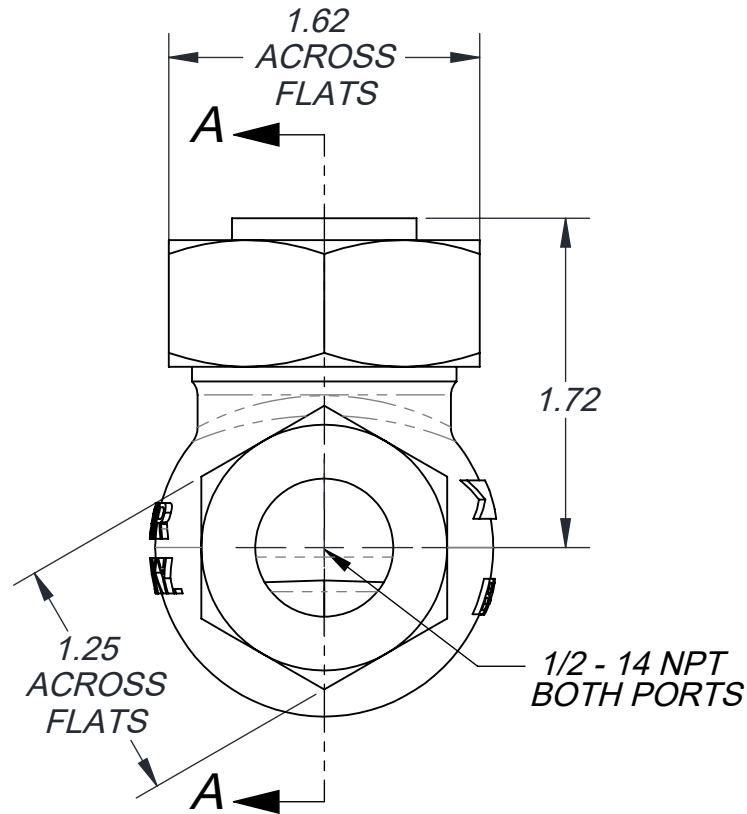
SEAL MATERIAL OPTIONS (SM)			
CODE	MATERIAL	O-RING	POPPET ASSY PART NO.
STD	BUNA - N+VITON	04-01-212	20-2238
-25	MOLY CTD BUNA		
-26	VITON	04-09-212	20-2238
-28	VITON+TEFLON	04-09-212	20-2015
-29	EPR		
-32	TEF+EPR+VIT		

550108-SM

B550108

- NOTES:
- PARTS IN HEXAGON BOXES ARE INCLUDED IN BOTH ASSEMBLY AND REPAIR KITS. SEE TABLE (R/K) FOR REPLACEMENT PART NO.
 - PRESSURE RATING: 0 - 500 PSI
 - TEMP. RANGE: -30°F TO 225°F (300°F OPT. SEALS)

REPAIR KITS (R/K)	
MATERIAL	PART NO.
BUNA - N	25-0100
VITON	25-0900



SECTION A-A

REVISIONS

REV	DESCRIPTION
B	PREVIOUS REVISIONS OMITTED
C	REDRAWN TO CURRENT ENGINEERING STANDARDS ECL: 99233 JDR 11-08-99
D	ECL: 08081 5-22-08 MJM DIM 2.88 WAS 2.75
	REDRAWN TO CURRENT ENGINEERING STANDARDS ECL: 21036 TES 06-23-21

Tolerances Unless Otherwise Specified:		
TYPE	FINISHED	AS CAST
DEC .00	± .015	± .030
DEC .000	± .005	± .010
FRACTIONAL	± 1/64	± 1/32
ANGLES	± 1/2°	± 1°

MATERIAL SPEC.
SEE TABLE

PROCESS SPEC.

PC. NO. 550108 - X

MADE FROM

1/2" NPT CHECK VALVE

B 550108

CAD FILE 550108

Lexair, Inc.

2025 Mercer RD, Lexington, Kentucky 40511

DRAWN	CHECKED	APRVD.
JDR	MFM	MFM
11-08-99	12-20-99	12-20-99

SHEET NO.	1 of 1	SHEETS
SCALE	1:1	
APPROX. WT.	1.419 lbs.	